

2008

User Manual for ML2000 USB Smart Card Reader



Dag Ivar Findreng

Megalink AS

V8.10



User Manual for ML2000

USB Smart Card Reader

Table of contents

1	USB Smart Card Reader	3
1.1	Installing the USB drives	3
1.1.1	Windows Vista.....	4
1.1.2	Windows XP SP2.....	9
1.1.3	Windows 2000	12

NB: Read the manual carefully when installing the USB drivers!

Require

MLCard 8.10 or higher

and

Monitor software DU-735 or higher

1 USB Smart Card Reader

1.1 *Installing the USB drives*

It's important to strictly follow the instruction manual when installing the USB drivers. See the section describing your operating system.

You can download the latest version of MLCard, containing the USB drivers from our homepage:
<http://www.megalink.no>

NB!

The card reader is the SCR335 from SCM Microsystems. It's important that the correct driver is installed. Make sure that Windows™ do **not** download drivers itself.

MLCard does only work with this specific card reader.

MLCard must be version 8.10 or higher.

1.1.1 Windows Vista

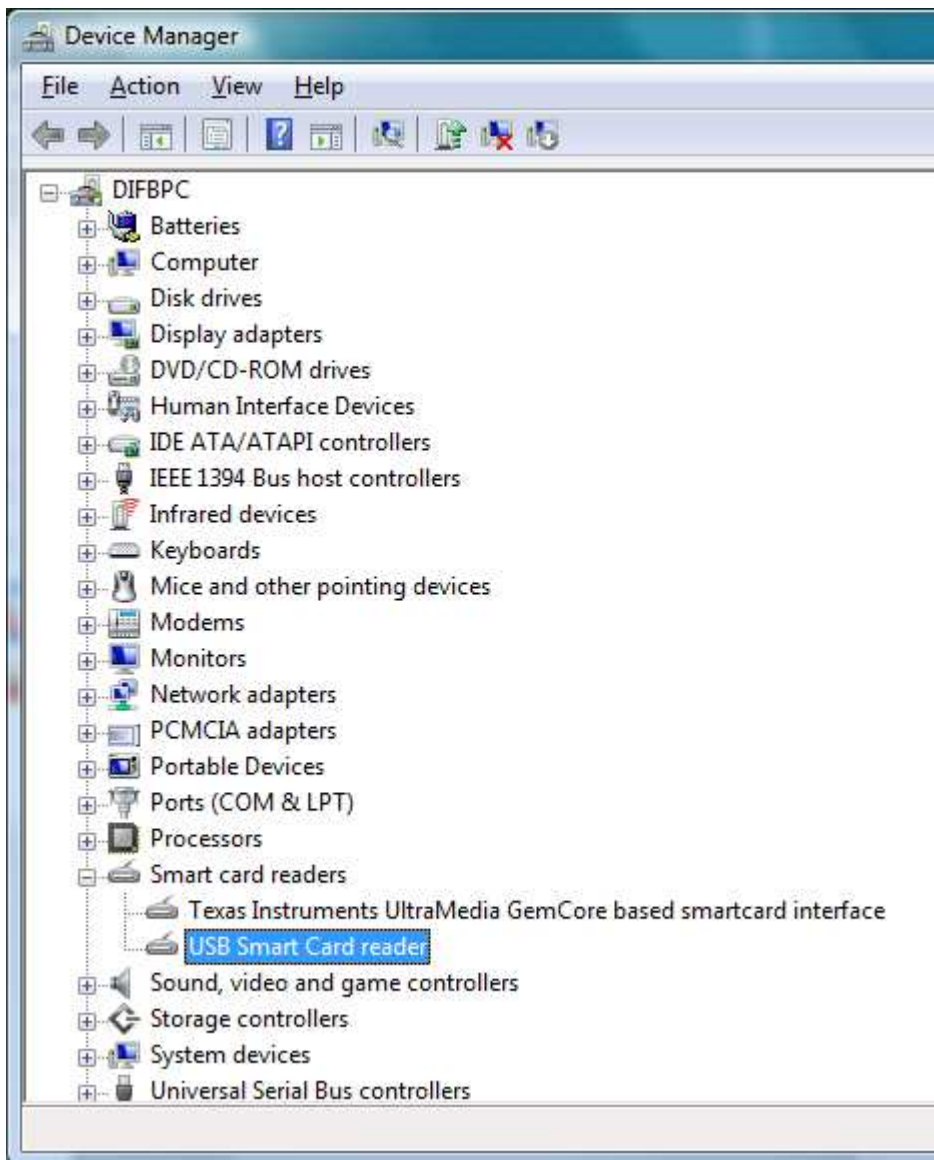
Windows Vista installs the driver without asking the user. Thus you have to manually override the driver setup.

Please do the following:

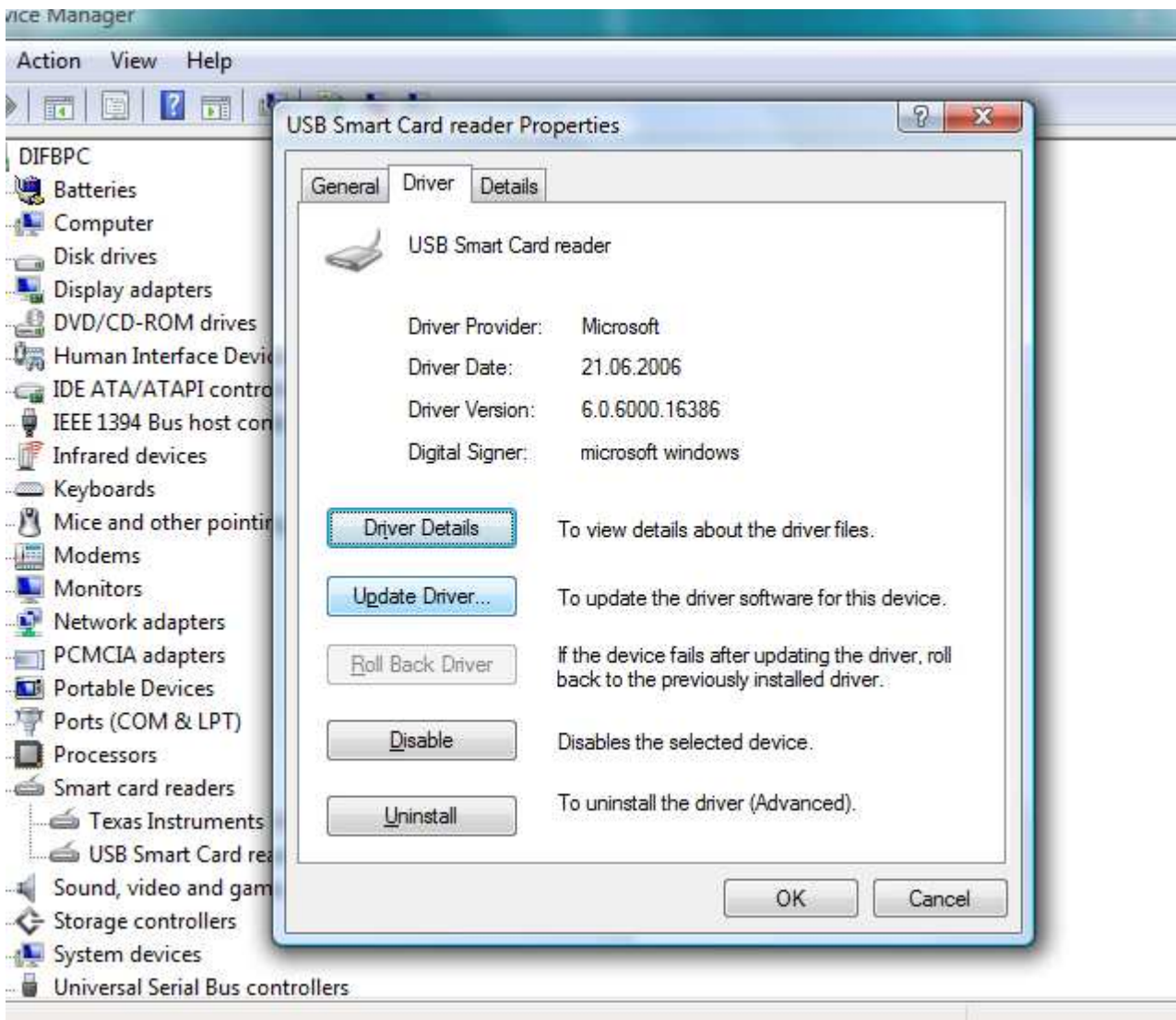
Close all open applications. Connect the Smart Card Reader and wait until Vista displays the “Installed new devices” dialog.



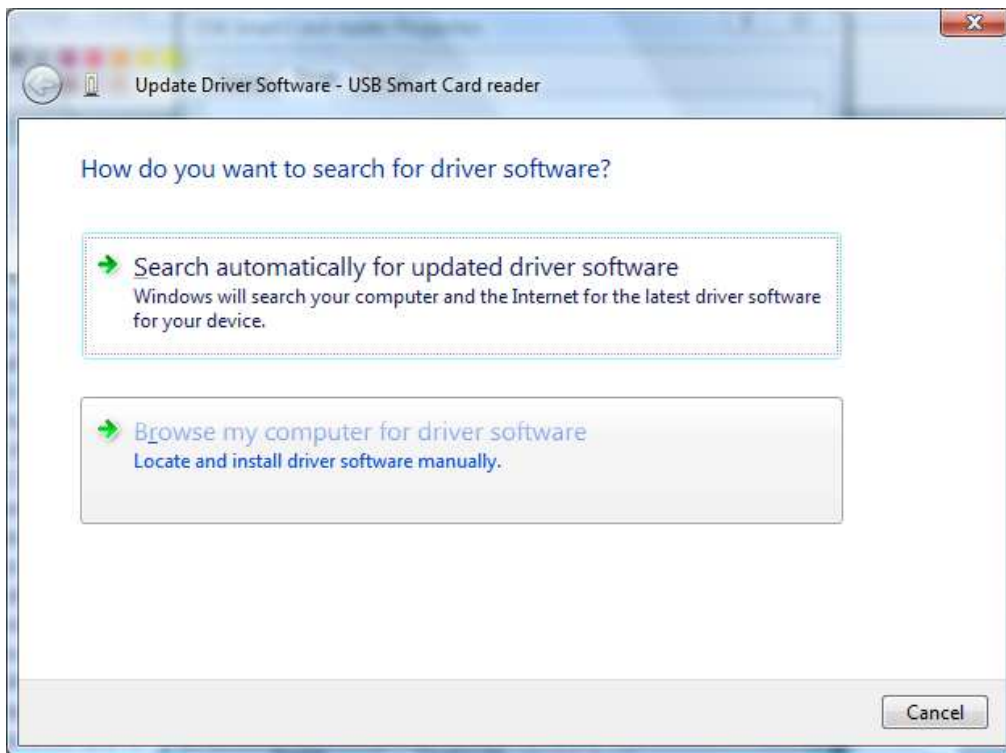
Then open the Start Menu and start the “**device manager**” application.



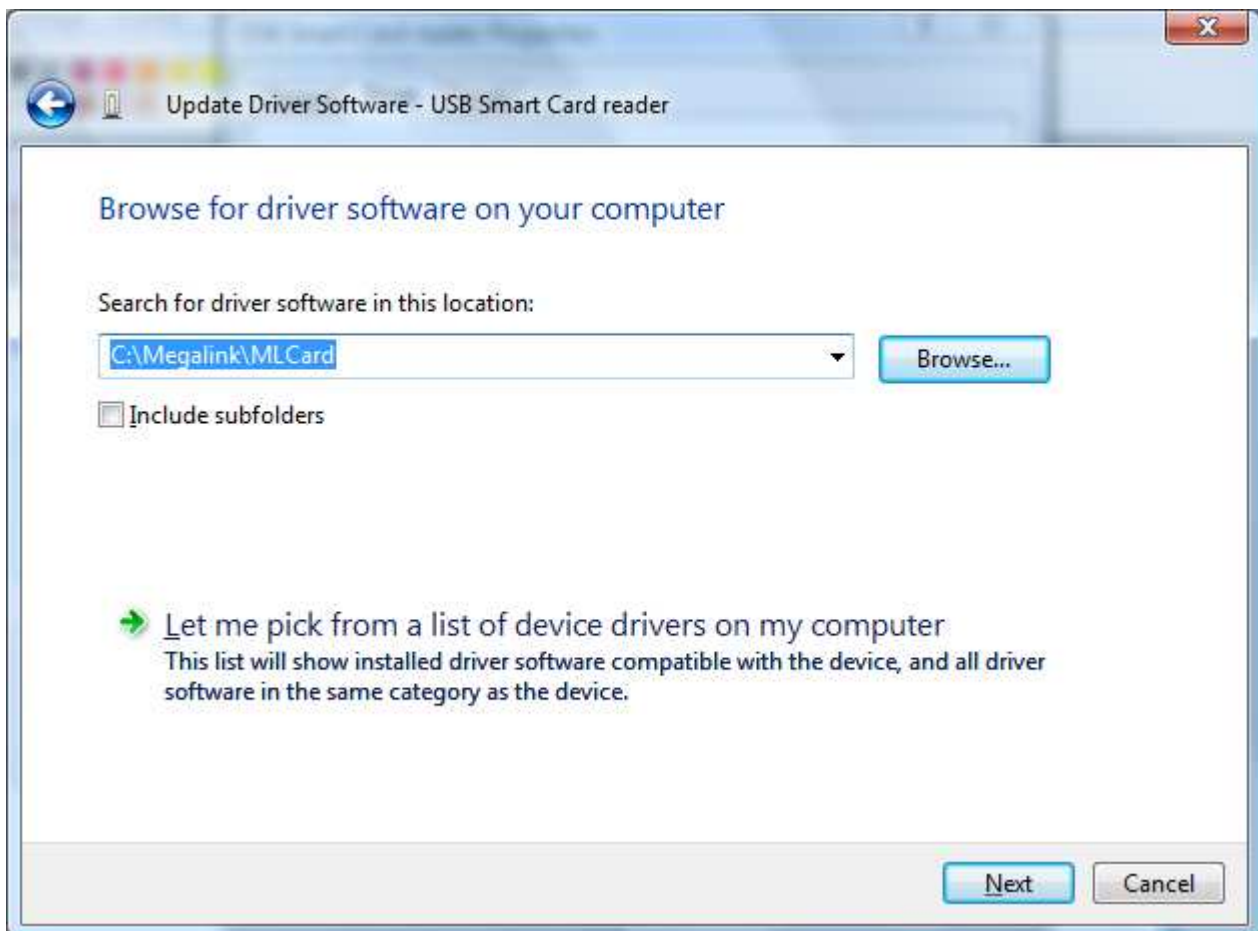
Right click the device “**USB Smart Card Reader**”, located under Smart Card readers, and open the **Properties** dialog.



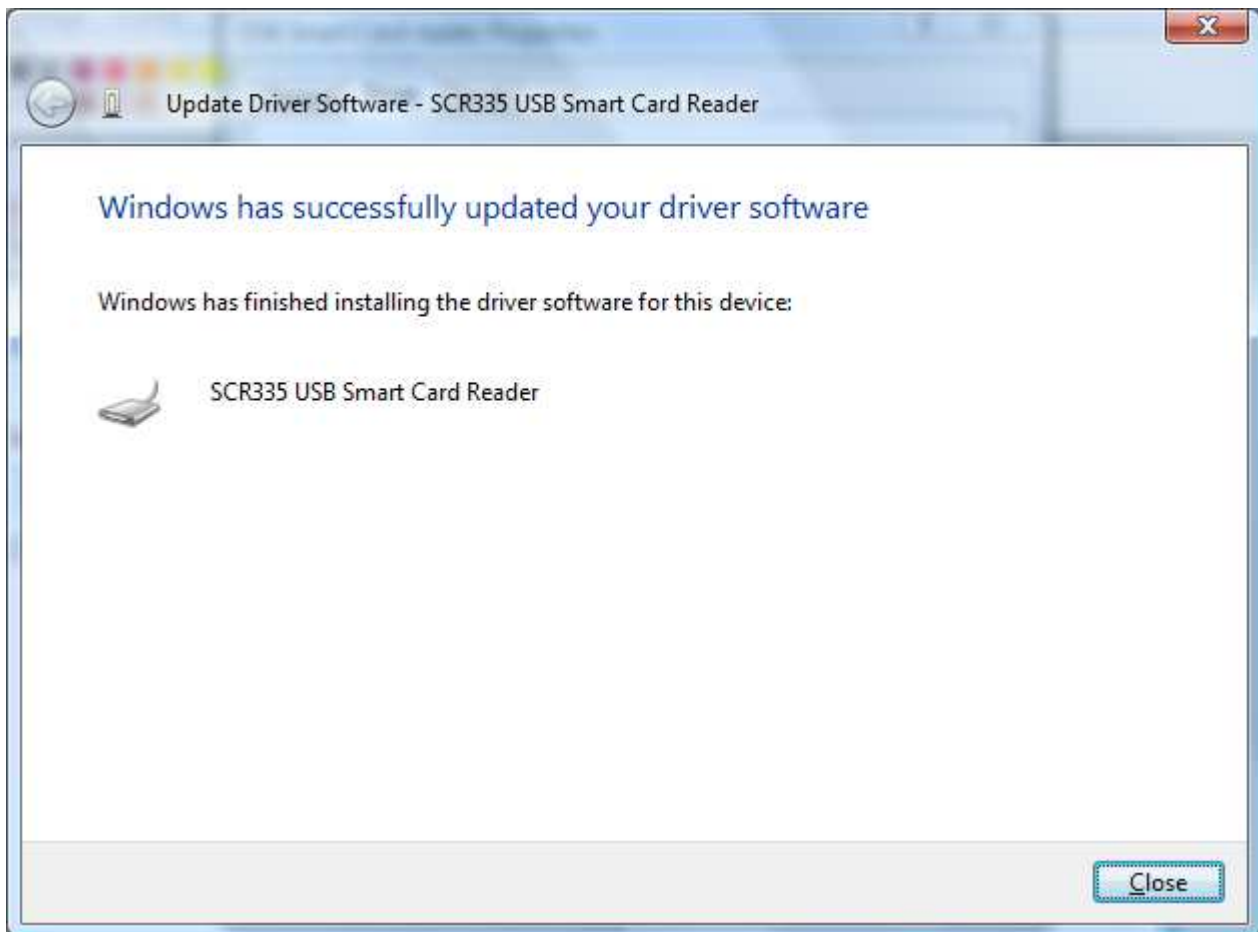
Press "Update Driver".



Select "**Browse my computer for driver, manually**".



Browse to the folder MLCard is located and press **Next** >.



The driver installation is completed. Press **Finish**.

You can now start MLCard.

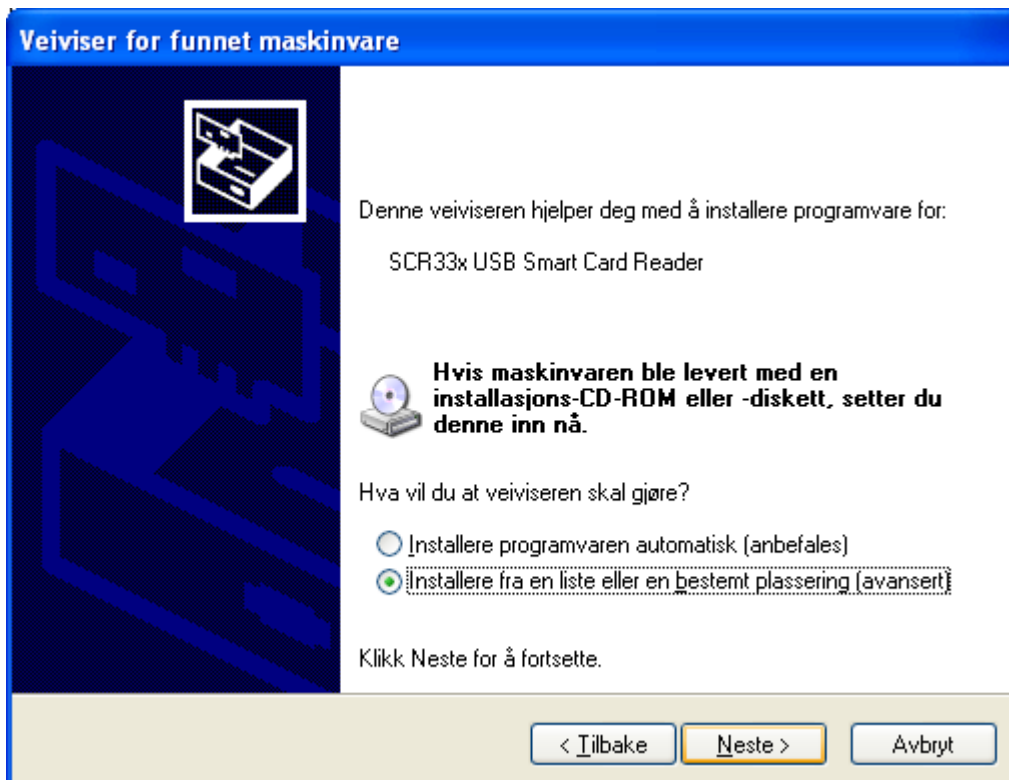
1.1.2 Windows XP SP2

Before you begin, close all active applications running on your computer, including MLRange. Connect the Smart Card Reader to the computer.

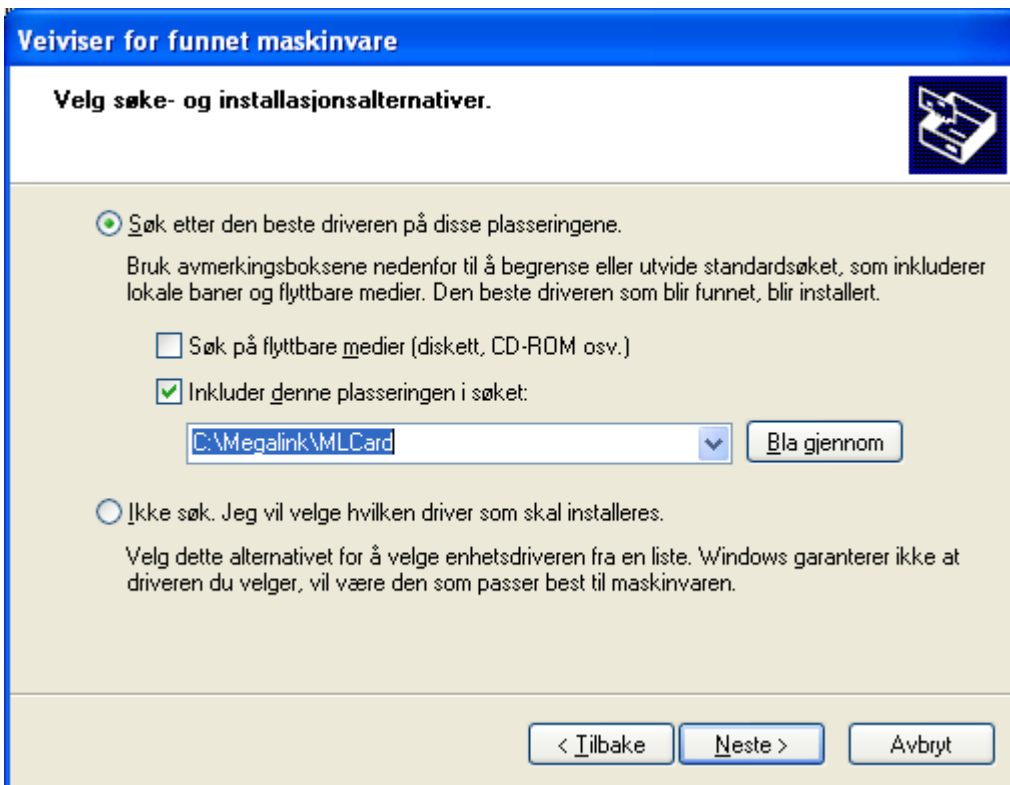
Windows will automatically detect your new device. The following dialog will appear:



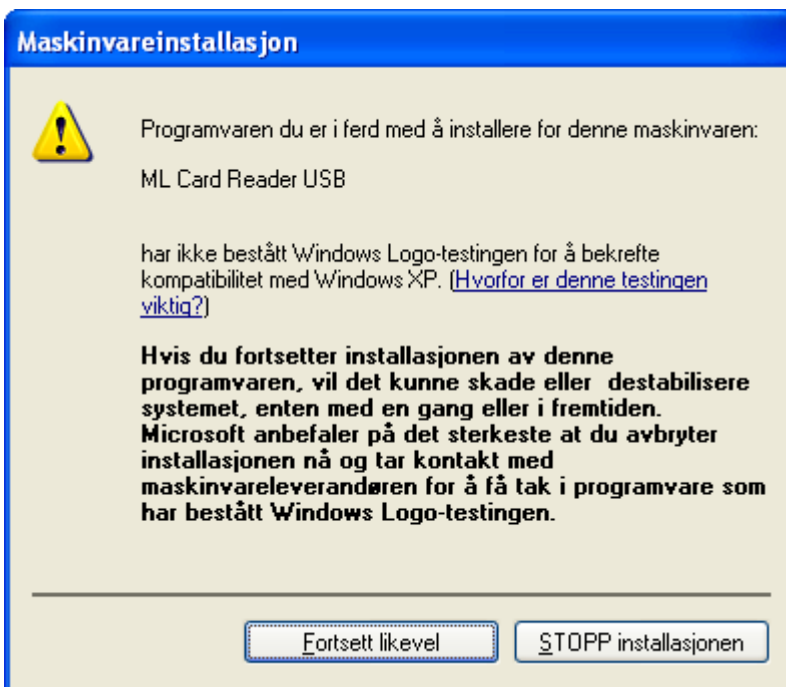
Select **No, not this time** and press **Next >**.



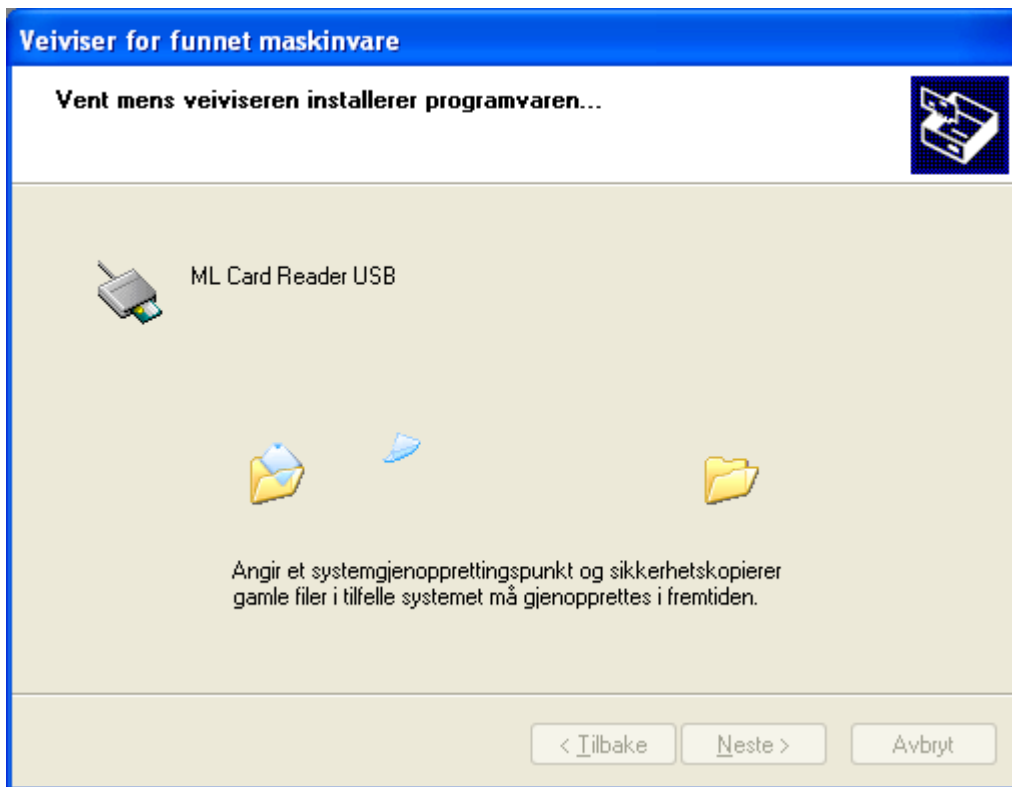
Select **Install from a list or specific location (Advanced)** and press **Next >**.



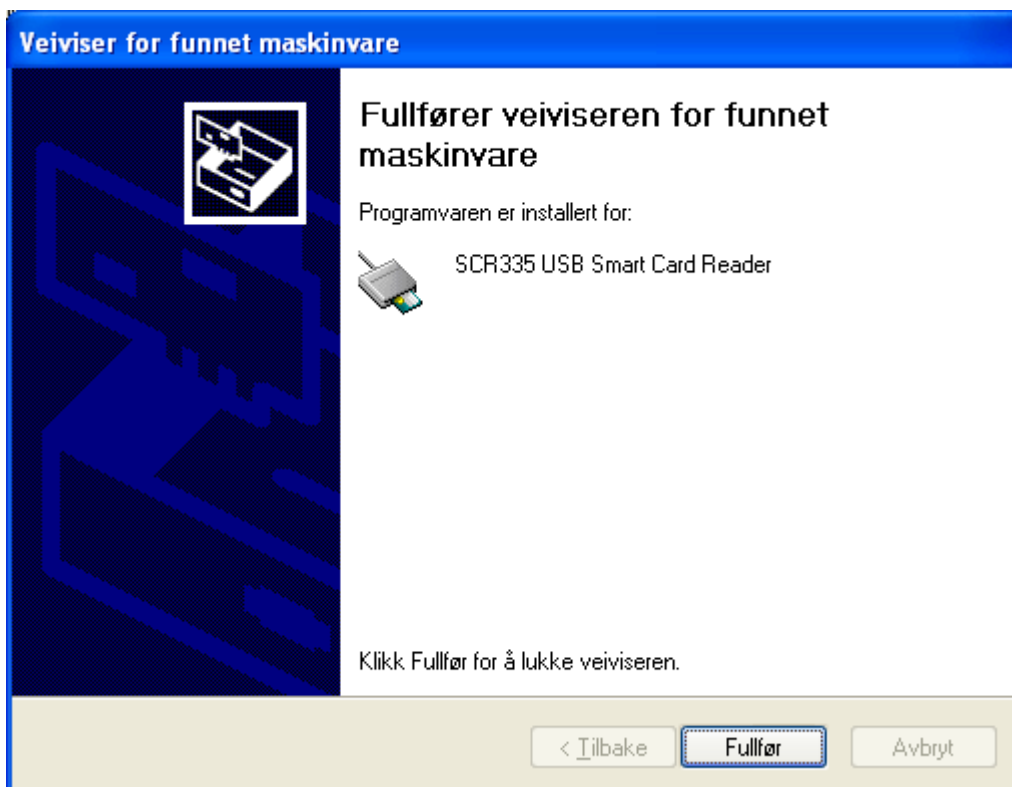
Select **S**earch for the best driver in these locations. and enable **O**NLY **I**nclude this **l**ocation in the search:. Browse to the folder MLCARD is located. Then press **N**ext >.



Select **C**ontinue Anyway.



Please wait while the required files are copied.



The driver installation is completed. Press **Finish**.

You can now start MLCard.

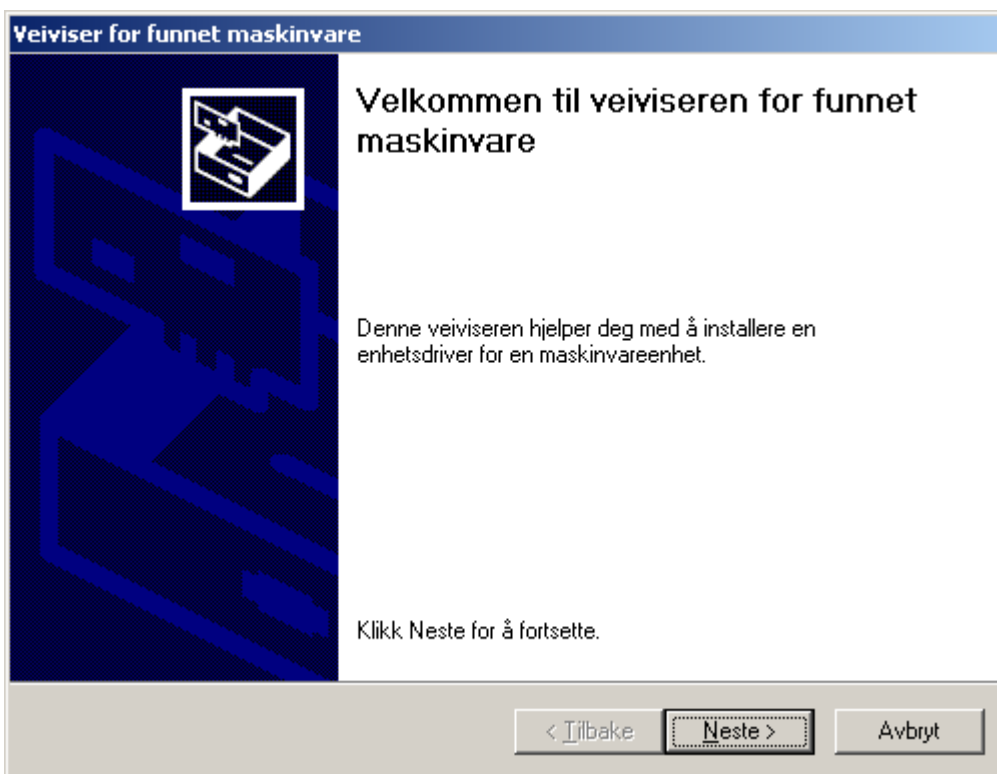
1.1.3 Windows 2000

Before you begin, close all active applications running on your computer, including MLRange. Connect the Smart Card Reader to the computer.

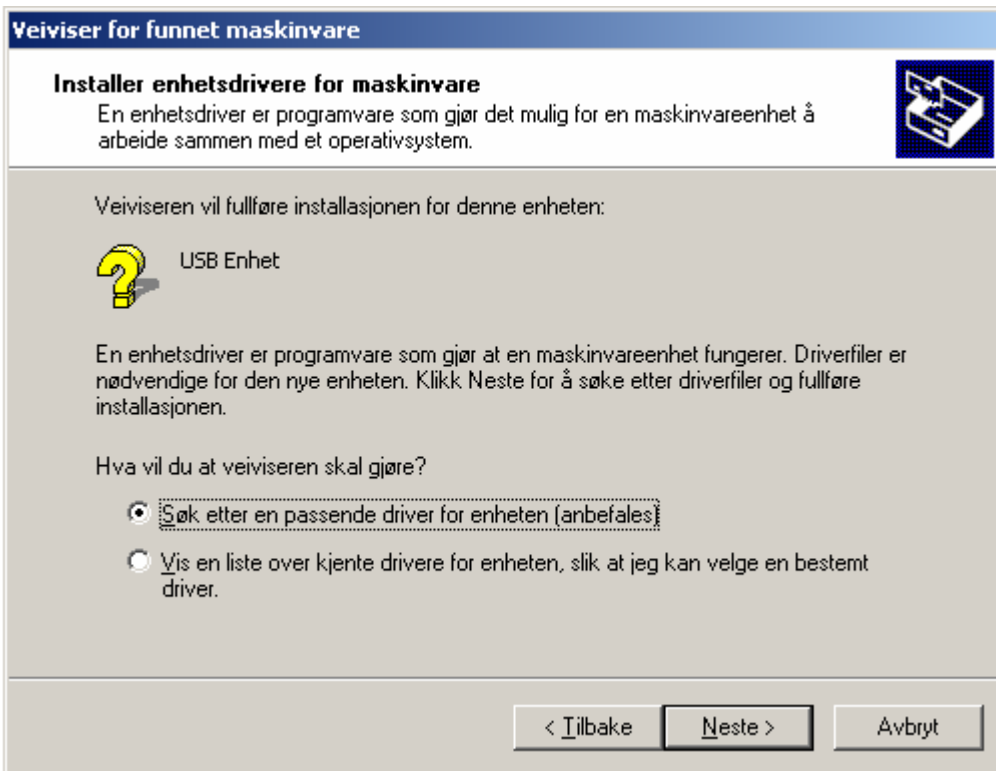
Windows will automatically detect your new device. The following dialog will appear:



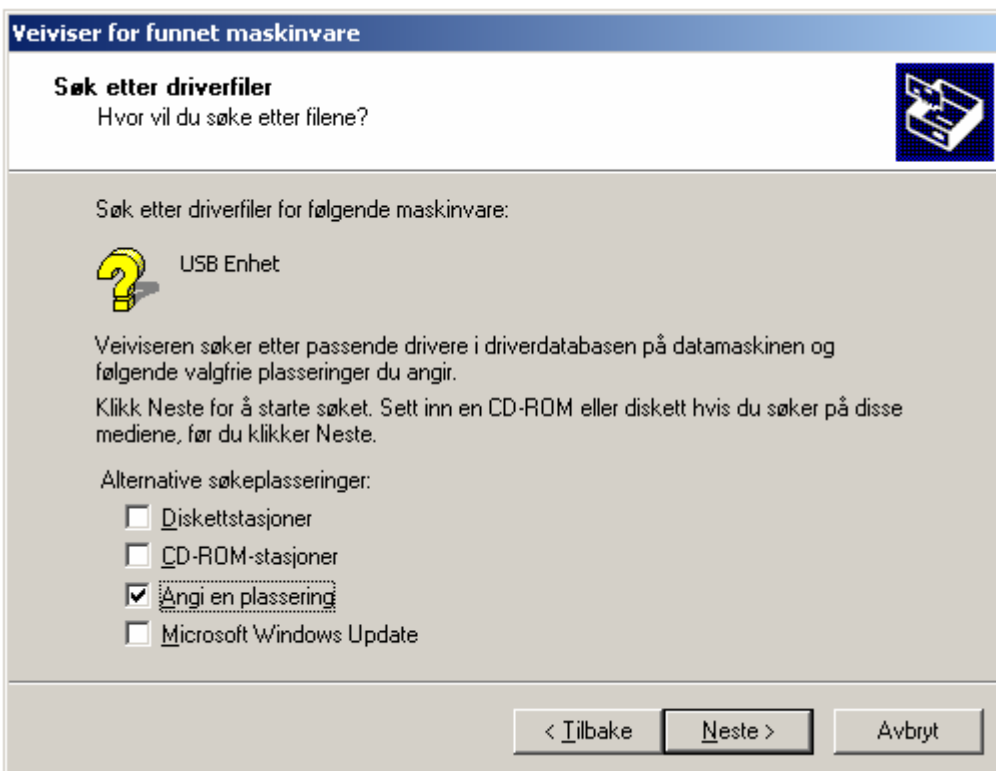
Please wait.



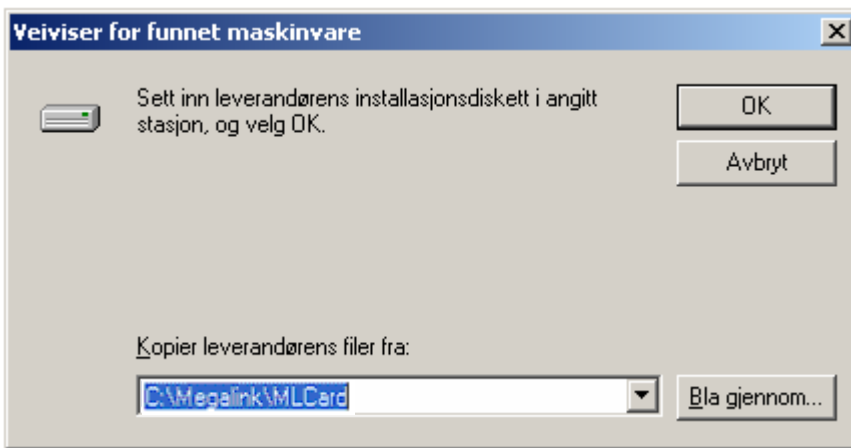
Press **Next >**.



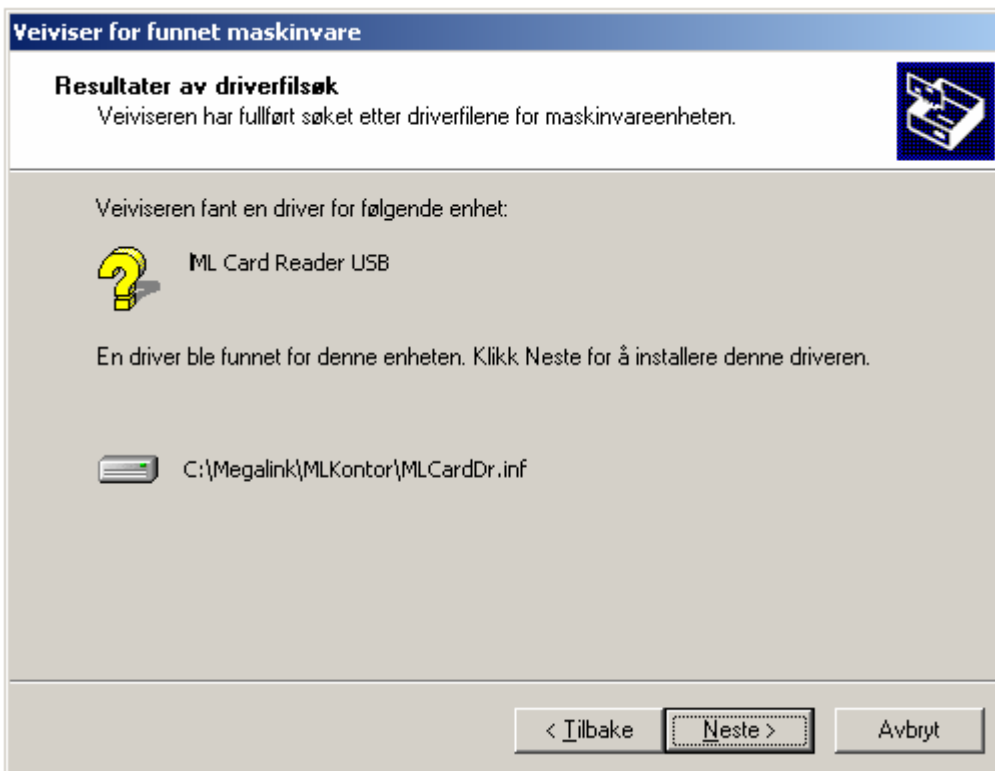
Select **S**earch for a suitable driver for my device (recommended).



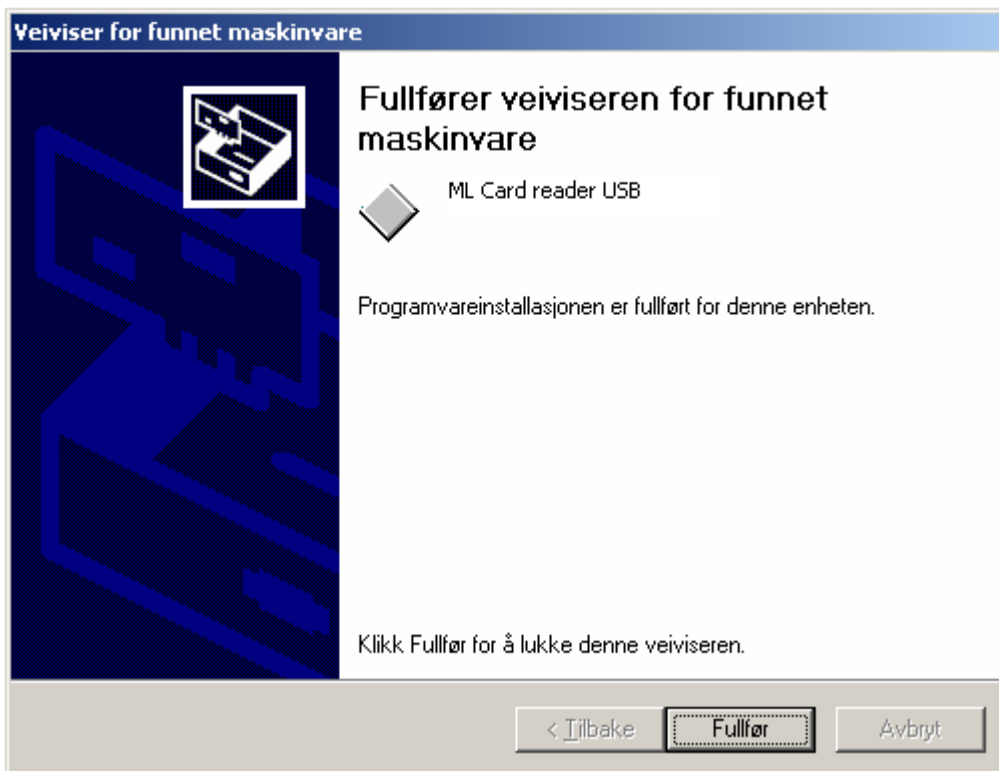
Select **O**nly **S**pecify a location. Press **N**ext >.



Browse to the folder MLCARD is located. Then press **OK**.



Press **Next >**.



The driver installation is completed. Press **Finish**.

You can now start MLCard.