

User manual for ML2000

Use of PC programs

Table of contents

5	Use of PC programs	3
5.1	Introduction.....	3
5.1.1	Help system.....	3
5.1.2	Software overview	3
5.1.3	Standard configuration.....	4
5.1.4	File prefix.....	5
5.1.5	General tips and recommendations	5
5.1.6	Steps for configuring networks	6
5.1.7	Requirements for PC.....	6
5.1.8	Get the software at internet	7
5.1.9	Install the software	8
5.1.10	Upgrade software	8
5.1.11	Competitions	9
5.2	MLRange	10
5.2.1	Naming standard	10
5.2.2	Main screen.....	10
5.2.3	First start-up	10
5.2.4	HASP security dongle.....	13
5.2.5	Normal start-up	13
5.2.6	Prepare for a new competition	13
5.2.7	Manage the shooting	13
5.2.8	Finals.....	14
5.2.9	Exit the program.....	14
5.3	MLRes.....	15
5.3.1	Naming standard	15
5.3.2	Main screen.....	15
5.3.3	First start-up	16
5.3.4	Enter licence key	16
5.3.5	Create a new competition.....	16
5.3.6	Adjust the competition setup.....	17
5.3.7	Procedure for competitions	17
5.3.8	Updating the club database	18
5.3.9	Exchange with electronic targets	18
5.3.10	WEB generator.....	18
5.4	MLView.....	19
5.4.1	Naming standard	19
5.4.2	Start-up.....	19
5.4.3	Configuration	20
5.4.4	Starting audience screens	21
5.5	MLAdmin.....	22
5.5.1	Naming standard	22
5.5.2	First start-up	22


5.5.3	Normal start-up	22
5.5.4	Work with MLAdmin	22
5.6	MLCard	23
5.6.1	Naming standard	23
5.6.2	Installing.....	23
5.6.3	Administrator card	23
5.6.4	User card	24
5.6.5	Usage.....	24
5.7	MLShoot	26
5.7.1	Naming standard	26
5.7.2	HASP security dongle	26

5 Use of PC programs

5.1 Introduction

5.1.1 Help system

A help system is included in the Megalink software from version 4.00. We recommend using this menu system as the primary source of documentation. The help system has the following functionality:

F1 key	General help or help about the current dialog
Shift + F1	Special help for the field that currently has the focus (e.g. the write cursor is in a edit field)
	Special help for a selected element on the screen. Click the icon with question mark first. The mouse cursor then changes to an arrow plus question mark. With this cursor you can click on areas of the screen you want help for (radio buttons, check boxes, drop-down menus, edit fields, buttons etc.)
Help menu	Starts the contents page of the help system

When the help system is started you can navigate to any topic you like. You can also print parts of the help system.

This user manual contains general information and the principles for the programs. The help system is the only source for information about:

- Complete overview of all available functions
- Explanation of the intention and use of functions in the dialogs
- Specific explanation of fields in each dialog

5.1.2 Software overview

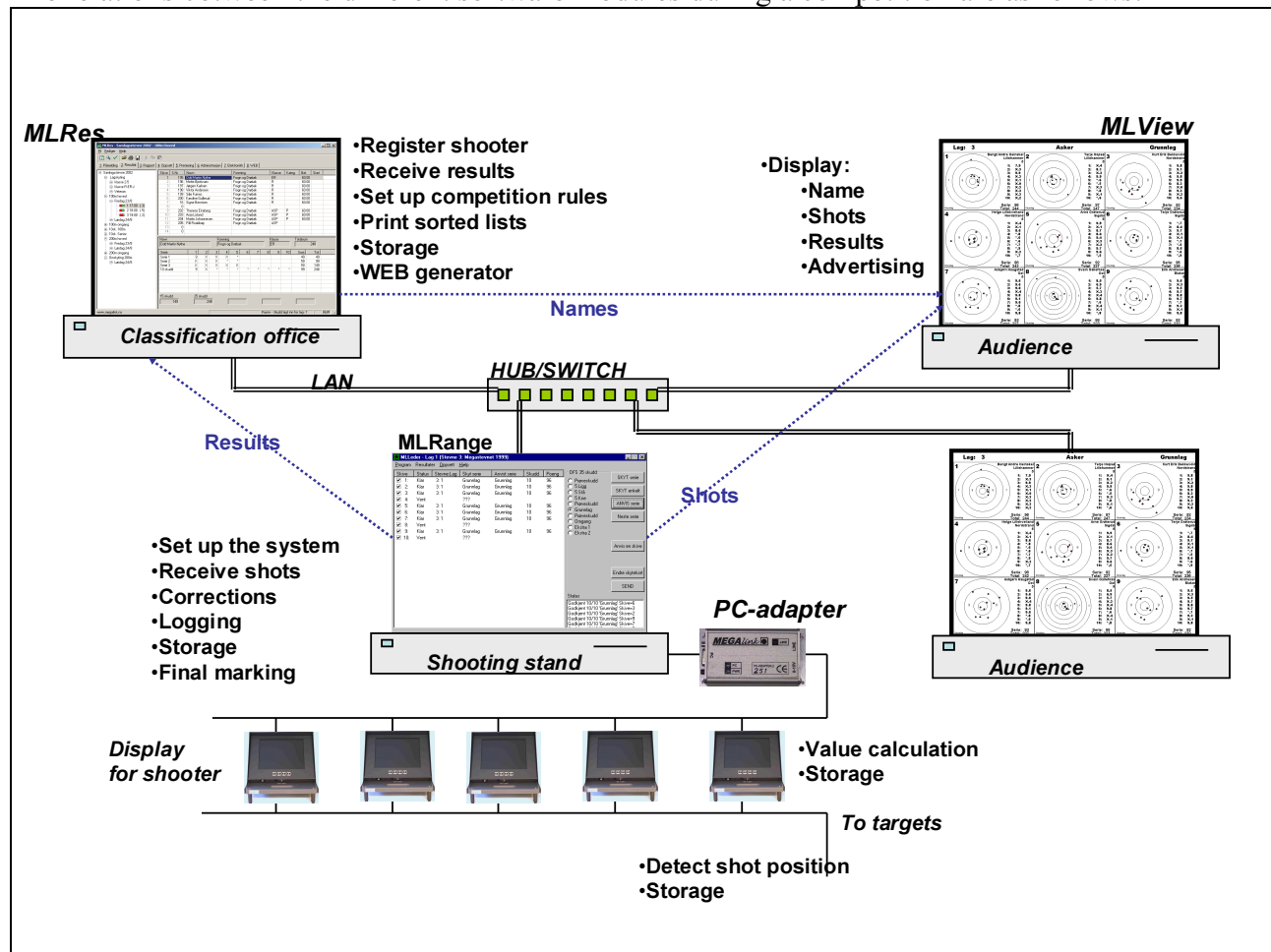
In a complete ML2000 system the following software is used on the different PC's at the competition site:

PC	Software	Usage
Shooting stand	MLRange	<ul style="list-style-type: none">• Manage the targets and displays• Control marking• Receive shots from the electronic system• Corrections after shooting faults• Logging and storage• Print graphical shot results• Manage final marking
Shooting stand	MLAdmin SW for DU and CU	<ul style="list-style-type: none">• Administration of the electronic system
<ul style="list-style-type: none">• Classification office• Registration	MLRes	<ul style="list-style-type: none">• Register name, club, class etc• Receive results from the shooting stand• Configure the competition setup (rules)• Print sorted result lists• Generate WEB pages• Storage
Classification office	MLRemote	<ul style="list-style-type: none">• Print graphical shot results
<ul style="list-style-type: none">• Classification office• Speaker• Audience	MLView	<ul style="list-style-type: none">• Graphics or list based view of names, shots and achieved results• Advertising

In addition there is two programs that are not used during competition:

- MLShoot is software for PC to replace the ML2000 display unit with your own PC. This solution is primarily for private practice shooting
- MLCard is used to manage smartcards for the ML2000 system

The relations between the different software modules during a competition are as follows:



5.1.3 Standard configuration

We strongly recommend following our standard configuration. This includes:

- The PC in the classification office is named:
OFFICE
- The PC at the shooting stand is given names depending on the range. Examples:
STAND300, STAND50 or STAND10
- Other PC's can be named freely, but we recommend recognizable names
- Share the C-drive with full permissions on the office and stand PC. Use the name **C** for this network resource
- All the Megalink software is installed under:
C:\Megalink.
- The software on the office PC will be put in the following network directory:
\\OFFICE\C\MEGALINK\OFFICE
- The software on the shooting stand will be put in the following directory (examples):
\\STAND300\C\MEGALINK\STAND or
STAND50\C\MEGALINK\STAND etc. depending on the range

- The software for the audience (MLView) is put on the office PC under the following directory:

\\OFFICE\C\MEGALINK\VIEW

An option for small competitions is to put all the software on one computer. Use the following directories:

- C:\Megalink\Office
- C:\Megalink\Stand
- C:\Megalink\View

The MLRange at the shooting stand is the most critical software component during a competition. It is important to let this software run undisturbed. For this reason the MLRange program should be installed physically on the PC at the shooting stand. For the same reason you should be careful with using other programs or performing other tasks on this PC during the shooting.

5.1.4 File prefix

To handle several shooting events (ranges and disciplines) within one competition, we are using unique prefixes for each event. This prefix is used by all the Megalink programs to separate names and results between different events. Be careful to verify that the result management (MLRes) and range management (MLRange) uses the same prefix for the same event.

The prefix consists of one letter and one digit. Usually the letter is used to distinguish events within a range while the digits are used to distinguish between the different ranges. Please refer to the following examples:

Event	Prefix
DFS Qualification 100m/15m	H1
DFS Final 100m/15m	O1
DFS Team competition 100m/15m	L1
DFS Qualification 200m/300m	H2
DFS Final 200m/300m	O2
DFS Team competition 200m/300m	L2
ISSF qualification on first range	Q1
ISSF Final on first range	F1
ISSF qualification on second range	Q1
ISSF final on second range	F2

5.1.5 General tips and recommendations

- We recommend using a simple TP network with switches (or hubs) to connect the PC's in a LAN. It is possible to get Vaseline filled outdoor Category 5 cable. Verify that the requirements for TP LAN is followed (i.e. use at least cat 5 cable and keep all cable segments under 100m length). In case of longer distances than 100m a possibility could be to use a HUB as repeater. Radio-based wireless LAN can also be an option if there is open air between the end points.
- We recommend TCP/IP as the network protocol (For users that are not familiar with networking, the NetBEUI protocol can also be a reasonable option). We recommend to set up the network with fixed IP addresses. Use the following addresses:

Computer	TCP/IP address
OFFICE	192.168.0.1
STAND10	192.168.0.10
STAND300.	192.168.0.30
VIEW and other	192.168.0.50-192.168.0.99

- It is an advantage for performance and stability if unnecessary or obsolete drivers for network cards, network protocols etc. is removed.

- Remember always to use unique computer names and a common workgroup. We recommend using **WORKGROUP** as the workgroup name.
- Use the computer name in the directory references (e.g. \\STAND10\C\Megalink\Stand\). In windows you can set up a network drive for network resources and use a notation like F:\Megalink\Stand10. However this requires careful administration and is more vulnerable when the system or individual PC's are started.
- When using Windows 95 there is often a need to install Internet Explorer 5.0 or higher. In addition to need a html browser this also upgrades critical system files of Windows 95
- Set your file manager (explorer) to view all files
- Set your file manager to display the full path of selected items
- Use the right mouse button when moving or copying files. When releasing the button you will be asked what you actually want to do.
- Shortcuts should be created with dragging from the explorer to the desktop with the right mouse button. When the configuration is upgraded or moved the shortcuts should be verified or recreated. Wrong "Start in" directory could give unexpected problems.

5.1.6 Steps for configuring networks

- Install the network card and remove obsolete cards
- Enter the network setup (control panel) and install a driver for the card
- Add the network protocol (TCP/IP or NetBEUI) and remove other protocols
- Give the computer a unique name and set the correct workgroup
- Allow file and printer sharing
- After restarting you can share your disk or printer as resources on the network. Right click on the disk (for example C-disk) and select sharing. Give the resource a simple name (we recommend the name C). Ensure that network users have permission to write on the resource.
- Check that you have access to the directories through "My network places" etc in the explorer.
- For Windows NT, 2000 and XP you have to create a common user with necessary permissions on all computers in the network.
- Remember to share the printer and verify if the printer driver is installed on the computers that needs to print.

5.1.7 Requirements for PC

We have listed the minimum requirements for the PCs. Usually we would recommend more powerful machines, but it is important for us to create software with moderate requirements to hardware. An old PC with Pentium II 500MHz and 256 MB memory would be a very acceptable machine on the shooting range. Observe that other software (operating system, office package etc) might set higher requirements to the equipment.

5.1.7.1 General

- The following Windows versions can be used:
 - Windows 2000
 - ... or newer
- All computers must be equipped with:
 - Pentium II CPU (or equivalent)
 - Network adapter (for TP)
 - Mouse and keyboard

5.1.7.2 MLRange

- Screen with resolution 800x600 or higher (15"-17" could be acceptable due to small space in the range management shacks)
- One free USB port. Serial adapters are no longer in stock.
- For ranges with more than 30 targets a PC with at least two USB adapters must be used. We would actually recommend the use of two adapters also for ranges with 20 targets or more. This will increase the communication bandwidth
- Standard Windows printer if graphical print-outs is required at the shooting stand

5.1.7.3 MLView

- Screen with resolution 800x600 or more for text based screens and at least 1024x768 for graphics based screens (17" to video projector)

5.1.7.4 MLRes

- Screen with resolution 800x600 or better (we recommend 1024x768). At least a 17"-19" screen should be used
- Standard Windows printer

5.1.7.5 MLShoot

- Screen with resolution 800x600 or better (we recommend 1024x768).
- Two free USB ports. One for the HW-key (licence) and one for the USB adapter.

5.1.8 Get the software at internet

All our software is distributed through internet. No licence codes are requires downloading the software. The use of MLRes for competitions requires licence code while MLView requires licence code for viewing audience screens. MLRange has no licence code unless the Sius Ascor interface is used. When you have ordered or purchased the software these codes are issued by Megalink.

- Enter our home page: **WWW.MEGALINK.NO**. Select English and click the link to **Download SW** and then follow the link to **Current software**.
- Read the information on the page
- Download the required software or documents from the table at the bottom of the page.
- Follow the instructions on the page if you are not familiar with downloading from internet. Refer also to the chapter about configuration and upgrading for additional information.

The programs are packaged as described under:

Example for file name	Contents	Extracted to
Stand-425.exe	MLRange.exe MLRange.chh Program.mlc MLAdmin.exe DU-425.exe CU-415.exe	Shooting stand
View-425.exe	MLView.exe MLView.mlc	Office
Office-425.exe	MLRes.exe Org.txt Skytterlag.txt MLRes.mlc	Office
MLCard-100.exe	MLCard.exe Driver for card reader	Administration PC

MLShoot-120.exe	MLShoot.exe MLCom.dll	Shooting stand
HDD32.exe	Driver for HW security dongle (used to protect MLShoot and Sius interface)	Shooting stand

The number in the filename reflects the version number for the included software. The file names in the example above have to be adjusted when you download.

5.1.9 Install the software

5.1.9.1 Run the installation program

Run the installation program and choose the programs to be installed. Install in C:\Megalink

5.1.9.2 Configure software

Read the description for each program for information about starting-up and configuration. The most critical configuration steps are:

- MLRange
 - File + Interface menu:
 - Serial communication port and range of lane numbers
 - Select the result management program and network path
 - Setup + Competition:
 - Prefix
 - Other competition or lane setup
- MLView
 - User tab: User and licence key
 - Range definition: Network path to the shooting stand
 - Screen definition: Create a library of screen definitions
 - Profile definition: Adjust profiles that suits your competition
- MLRes
 - Exchange tab:
 - Select the brand of the electronic target and define the prefix
 - Activate the exchange
 - Other setup for the competition

5.1.10 Upgrade software

Upgrading is almost identical to installation. Usually you can overwrite the old programs with new program versions. On start-up the programs will attempt to upgrade data files if needed.

NB! Always read information about the new version. In some situations we require a new clean installation. This is done as follows:

- Delete shortcuts
- Rename the old directory (e.g. stand2002 or stand.del)
- Install the new software
- Create shortcuts
- Configure the software

A backup is also a good idea before a plain upgrade.

NB! Don't keep old copies of directories forever, since the overview of the system might be reduced. The intention with copying the old directories is to have an easy fall-back and reference in case of unexpected problems.

5.1.11 Competitions

Shooting on electronic targets will not reduce the requirement for knowledge of the rules and regulations for the competitions. Often there are special paragraphs in the regulations regarding electronic targets.

Before starting a competition it is important to clarify the following topics:

- How to handle the shooting program (e.g. procedure for shooting sighting shots and changing between sighting and match shots)
- How to handle shooting faults, protests, shoot-off etc.
- Need for control sheets behind the targets

Since marking with electronic targets usually is faster than traditional marking, the timing of the competition must be considered well. Avoid stressing the shooters too much. Allow some time between relays etc. in order to handle maintenance, fault shooting and unexpected events.

Follow the procedures for maintenance and maintenance logging!

5.2 MLRange

This chapter provides an introduction to the use of MLRange (version 4.00). The screen examples will not be similar to your own version. For more detailed information we would like to refer to the on-line help.

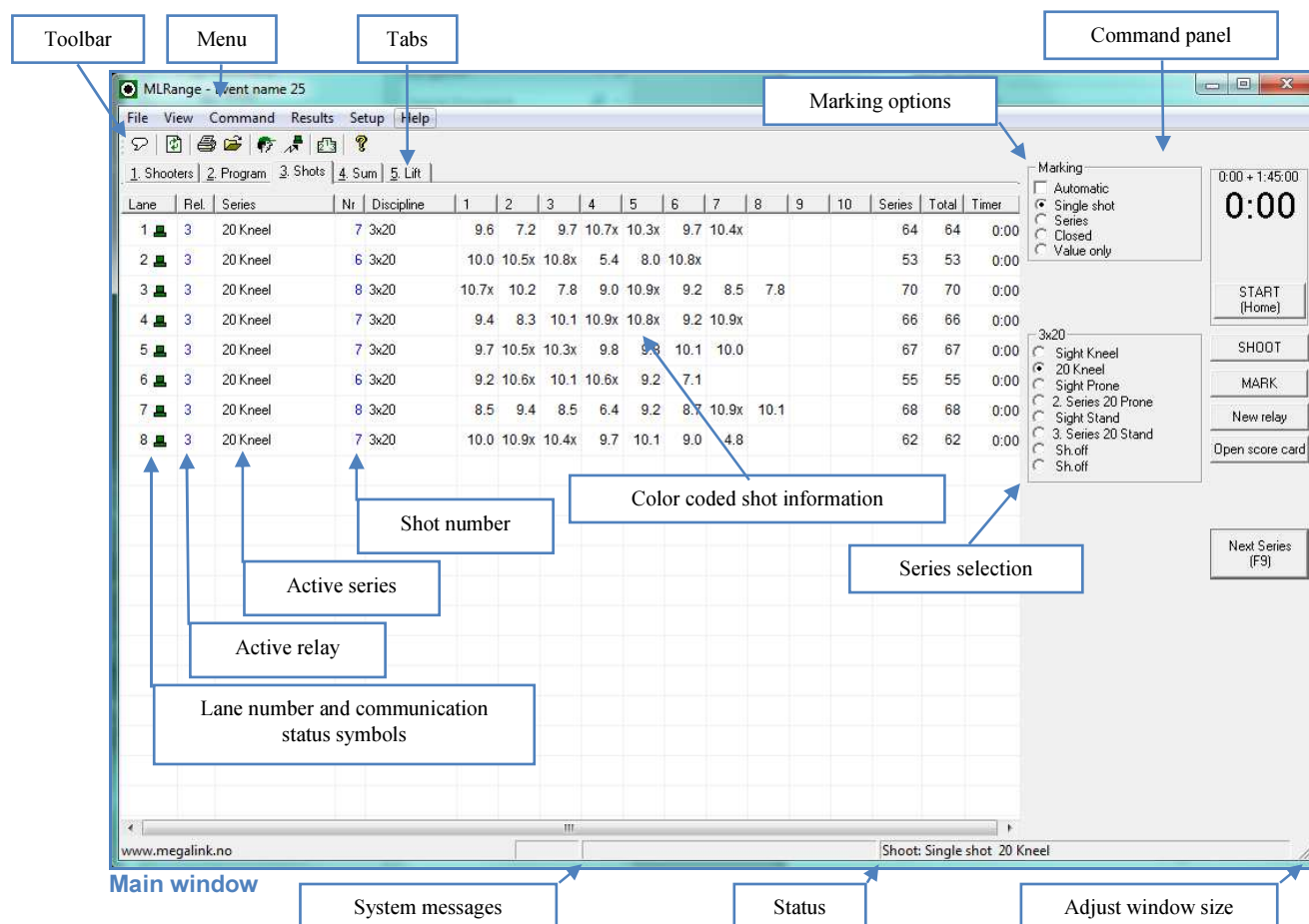
5.2.1 Naming standard

MLRange should be installed and executed locally on the range management computer at the shooting range. Our recommendations and guidelines for naming are as follows:

Item	Standard	Example/Comment
Computer name	STAND<range>	STPL300 STPL10
Share the C-disk with the following resource name	C	Remember write permission
Directory for MLRange	C:\Megalink\Stand	The path through the network will be: \\STAND300\C\Megalink\Stand

5.2.2 Main screen

The main screen in MLRange contains the following:



5.2.3 First start-up

On the first start-up you will be guided through some dialogs to insert critical configuration.

5.2.3.1 Interface

Interface

Range information

License Name: My License Name License Code: My License Code

Sponsor:

Range:

Operational mode

☒ Normal ☒ Simulate ☒ Display advance parameters

☐ Felthurtig ☐ Remote Control Enabled

Communication

	Channel type	From target	To target
Channel 1	COM1	1	20
Channel 2	Unused	1	10
Channel 3	Unused	1	10
Channel 4	Unused	1	10
Channel 5	Unused	1	10
Channel 6	Unused	1	10

USB adapters

Add

Search for new

Delete

Extra USB channels

Office

Results program: MLRes Standard

Folder: \\OFFICE\C\Megalink\Office\ML\ ...

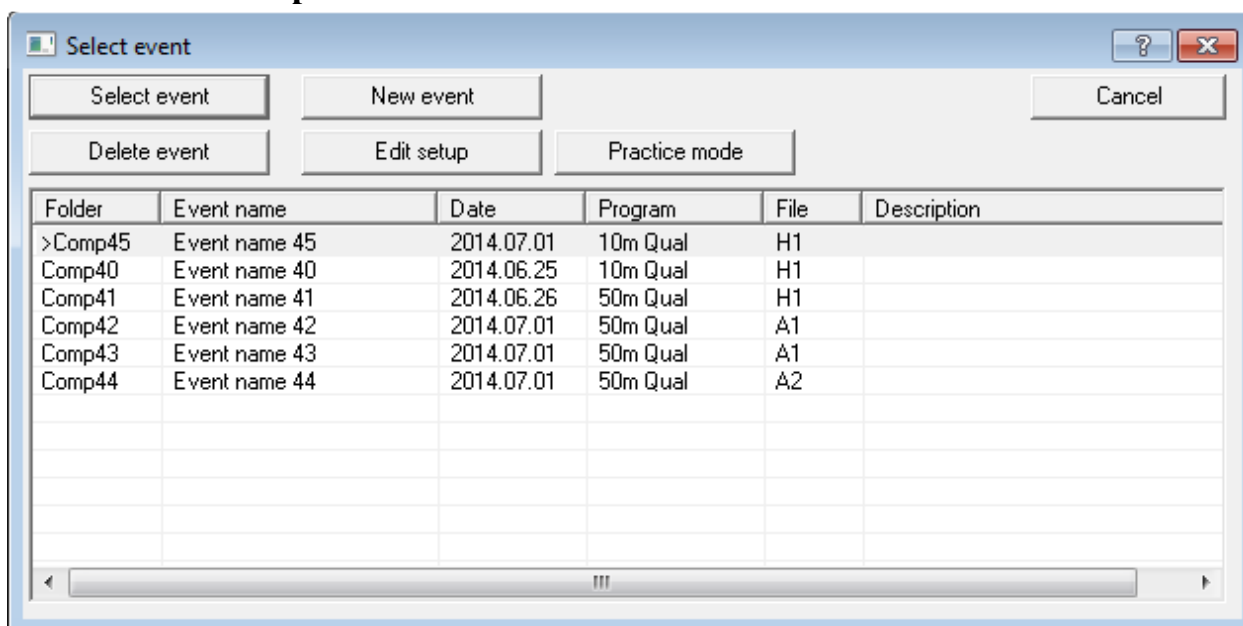
Undo OK (save) Cancel

Interface Dialog

Select the serial communication port that the PC-adapter is connected to. Also select which lane numbers are controlled through this channel. If the PC is connected to the ML2000 system and all display units are switched on, you can try a scan to set up these parameters automatically. Also select which result management system to use and enter the network path to the directory for the exchange files. A button to get standard values can be used.

Instead of selecting a serial communication port, you can select the simulation option. This provides a smart way to learn to use the program without having targets connected to the system.

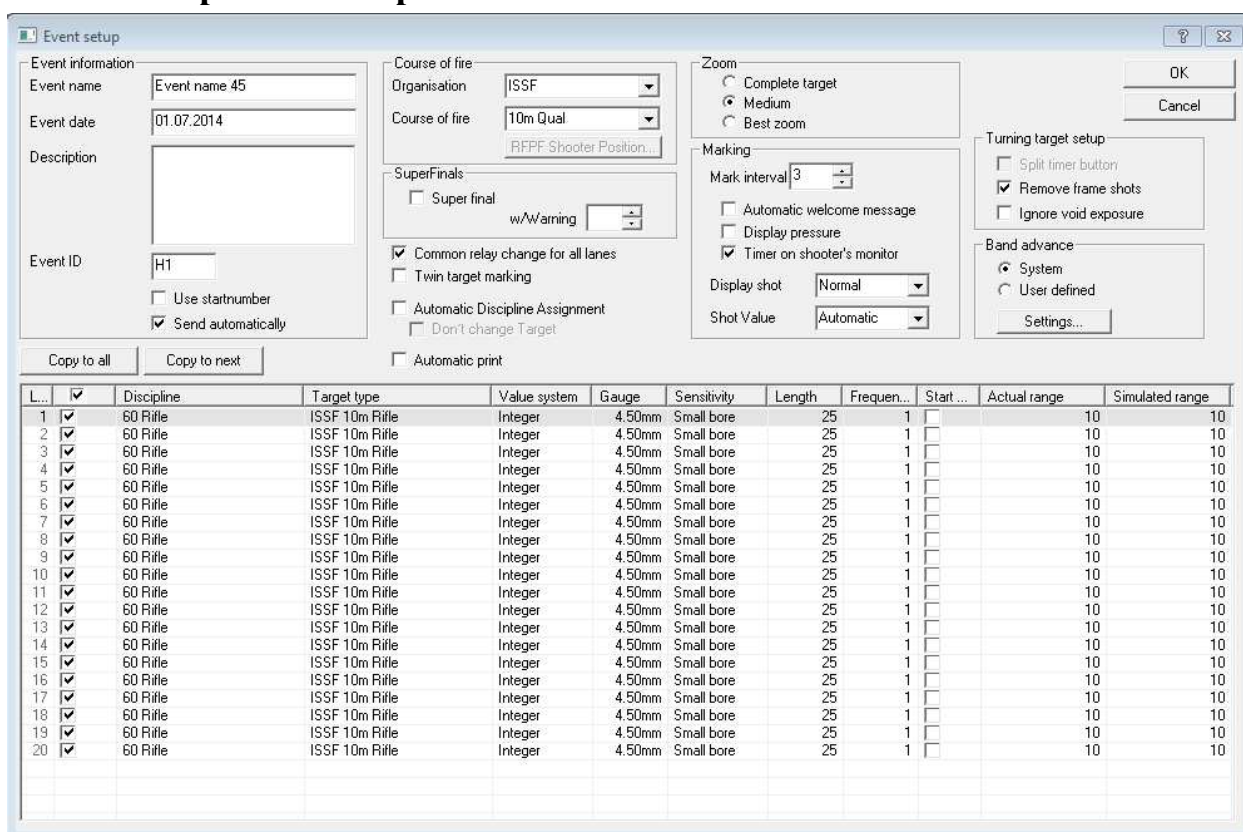
5.2.3.2 Select competition



Event Selection Dialog

On the first start-up this list will be empty. You then have to create a new competition. This is done by clicking the **New Event** button. You will then be guided into the dialog for Event setup.

5.2.3.3 Competition setup



Event Setup Dialog

Fill in a competition name, select a shooting program and enter an Event ID prefix. Other parameters can also be set according to needs for the competition. Activate the targets that are to be controlled by MLRange. The remaining targets can be used for practice.

Exit the dialog with the OK button. Confirm that you want to activate the competition.

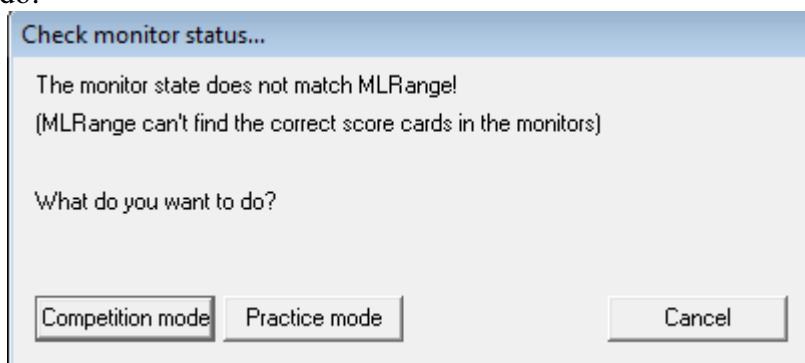
The start-up is now finished and the program can be used as normal.

5.2.4 HASP security dongle

The use of the Sius Ascor interface requires having a security device installed. The device should be connected to the parallel port of the range management PC during use of MLRange. The driver for the security device must be installed on the PC by running the program HDD32.exe. This installation program can be downloaded from our internet pages.

5.2.5 Normal start-up

MLRange will during normal start-up perform a verification of the status for the connected display units. If the found status is not consistent with the expected status you will be asked about what to do:



5.2.6 Prepare for a new competition

Follow this procedure to create a new competition:

- Start the ML2000 system
- Check that the PC is connected through the PC-adaptor
- Start MLRange
- Create a new competition (either from the start-up verification dialog or from the menu function File + Competition)
- Select lanes, shooting program, prefix and other options in the competition setup
- Activate the competition when asked and create the first relay
- Enter the Setup + Targets menu and verify the target type, sensitivity and possibly the motor parameters
- Select the first series and press the command button **SHOOT**.

Refer to the on-line help for detailed descriptions for dialogs and fields.

5.2.7 Manage the shooting

5.2.7.1 Controlled by range officer

Perform the following steps:

1. Create a new relay
2. Select the wanted series and press the button **SHOOT**
3. Start the shooting command at the same time as you are starting the timer in MLRange
4. Give the stop command and start marking with pushing the **MARK** button
5. Select the next series and repeat the steps 2, 3 and 4 until the shooting program is finished
6. When the shooting is finished you can switch to the next relay with the **NEW RELAY** button. In case of a break in the shooting or at the end of the day, it would be smart to use

the menu function **Results + Send to Office** to ensure that the classification office is updated.

7. Use the button **Open score card** in case of need for corrections

5.2.7.2 Controlled by shooter

Perform the following steps:

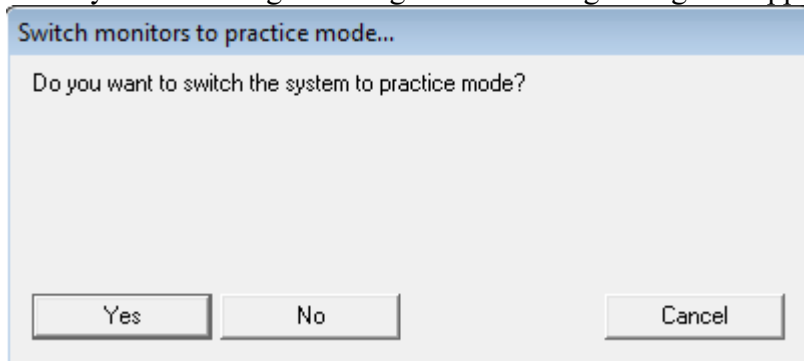
1. Create a new relay or insert new shooters on some targets
2. When the shooting is finished you can switch to the next relay with the **NEW RELAY** button. In case of a break in the shooting or at the end of the day, it would be smart to use the menu function **Results + Send to Office** to ensure that the classification office is updated.
3. Use the button **Open score card** in case of need for corrections

5.2.8 Finals

For finals with individual lane marking after shooting there is a special menu function **Results + Final marking**. Refer to the on-line help for details on how to do this.

5.2.9 Exit the program

When you are exiting MLRange the following dialog will appear:



If the competition is over you would usually select yes to set the display units back to manual control for practice usage without PC.

NB! The display units are not set to practice mode if they are not connected and switched on. Try to remember this step when closing down a competition since this simplifies start-up at the next practice shooting!

If you are just exiting MLRange for a while or are going to continue the competition the next day, you will usually not set the display units to practice mode.

5.3 MLRes

This chapter provides an introduction to the use of MLRes (version 4.00). The screen examples will not be similar to your own version. For more detailed information we would like to refer to the on-line help.

5.3.1 Naming standard

MLRes should be installed on the office computer, but can be executed from different computers in the network. Our recommendations and guidelines for naming is as follows:

Item	Standard	Example/Comment
Computer name	OFFICE	
Share the C-disk with the following resource name	C	Remember write permission
Directory for MLRes	C:\Megalink\Office	The path through the network will be: \\OFFICE\C\Megalink\Office
Directory with exchange files	C:\Megalink\Office\ML	The path through the network will be: \\OFFICE\C\Megalink\Office\ML
Directory with audience WEB	C:\Megalink\Office\AWEB	The path through the network will be: \\OFFICE\C\Megalink\Office\AWEB
Directory with speaker WEB	C:\Megalink\Office\PWEB	The path through the network will be: \\OFFICE\C\Megalink\Office\PWEB

5.3.2 Main screen

The main screen of MLRes contains the following:

Search for shooter

Select competition

Verify data

Static tabs

Select:

- Event
- Day/Relay

Work areas

Resize window

Guide for menu functions

Messages when editing

Status for exchange

Esc = Exit
Alt+F4 = Exit
F1 = Help
Skift+F1 = Help pr. field
Alt+1..8 = Go to tab nr.

The different functions are available and dependent upon the combined selection of the tab at the top and the level in the tree at the left. As an example the registration of shooters are done on the tab called registration. The shooters will be registered in the relay that is highlighted in the tree.

5.3.3 First start-up

On the first start-up the following tasks should be executed::

1. Select the main tab Administration
2. Select the sub tab Organisation
3. Press the button **Import**
4. Select the sub tab Clubs
5. Select the relevant organisation in the drop-down list
6. Press the button **Import**
7. Start the dialog for selecting competitions through the toolbar or the menu **File + Competition**
8. Create a new competition as described later

5.3.4 Enter licence key

The program can be used without licence key for testing. There are no limitations in the program except that all print outs will get the following text in the upper right corner:

Demo version

Illegal for competitions!

To insert a valid licence the following procedure must be followed:

- Select the main tab Administration
- Select the sub tab User
- Insert values in the fields for User and Licence key. Be careful to write the user name exactly as issued from Megalink (capital letters, spaces and punctuation).

With a valid licence key the user name will appear on the print-outs.

5.3.5 Create a new competition

Creating a new competition is done by starting the Competition dialog from the toolbar or the menu **File + Competition**. The following dialog appears:

Katalog	Stevnenavn	Dato	Organisasjon
Comp2	Prøvestevne	04.01.2003	DFS

Use the button **New competition** and you will be guided through a few steps to create a complete basic competition. The first dialog is the following:

Nytt stevne - Hoveddata

Stevnenavn: Sommerstevne

Stevnedato: 12.04.2003

Organisasjon: DFS

Antall hold: 2

Avbryt Neste

In addition to the name and date for the competition, you can enter organisation and number of events.

When the **Next** button is pressed, you will get the following dialog:

Nytt stevne - Hold (1/2)

Skyteøvelse: Bane 100m

☒ **Finale til slutt**

Elektronikkssystem

- ☐ Ikke elektronikk
- ☒ ML2000
- ☐ X-LINK
- ☐ Sius
- ☐ Kongsberg mikroelektr

Avbryt Tilbake Neste

Use the on-line help for a description of the options.

Finally you will be asked to confirm the creation of the new competition.

5.3.6 Adjust the competition setup

When the competition is created you have to create relays, define the prizes and adjust the competition to your needs. Use the following short checklist before large competitions:

- Create days for the events (under the setup tab)
- Create relays
- Insert payment required per class
- Adjust or set up the prize configuration

5.3.7 Procedure for competitions

The procedure for competition is the following:

- Create the competition
- Adjust the competition setup
- Register participants

- Register results (manually or automatically from the electronic targets)
- Register team competitions
- Print lists and generate WEB pages during the competition for audience and speaker
- Verify the prize setup and registered data
- Generate the final competition report, press reports and generate home pages

5.3.8 Updating the club database

When updates for the club database is available, the following procedure should be followed:

- The file with updated data is put in the MLRes directory (C:\Megalink\Kontor)
- Select the main tab Administration in MLRes
- Select the sub tab Clubs
- Verify the selection of organisation
- Push the **Import** button

5.3.9 Exchange with electronic targets

In the main tab Exchange, you can manage the exchange with the electronic target software. Check which event you are selecting in the tree at the left. The following parameters are critical (please refer to the on-line help for more details:

Activate exchange on this PC	Usually activated only on the classification PC.
Activate exchange for this competition	This option must be on to allow any data to be exchanged for this competition. The selection is automatically turned off when selecting or creating competitions in MLRes!
Select the brand of electronic targets	Select the correct type of electronic targets
Prefix	This field is critical for successful exchange. The field are described several places on the user manual and in the on-line help systems.

The lists at the bottom of the exchange tab provide information about activity and errors or warnings from the exchange process.

NB! When you select a competition or creates a new competition the exchange is automatically **turned off**. And all exchange files are deleted. For this reason you should not select other competitions during a on-going competition. It is also critical to remember to activate the exchange for new competitions.

5.3.10 WEB generator

On the WEB tab you will find options for the automatic WEB generator. Refer to on-line help for details.

5.4 MLView

This chapter provides an introduction to the use of MLView (version 4.00). The screen examples will not be similar to your own version. For more detailed information we would like to refer to the on-line help.

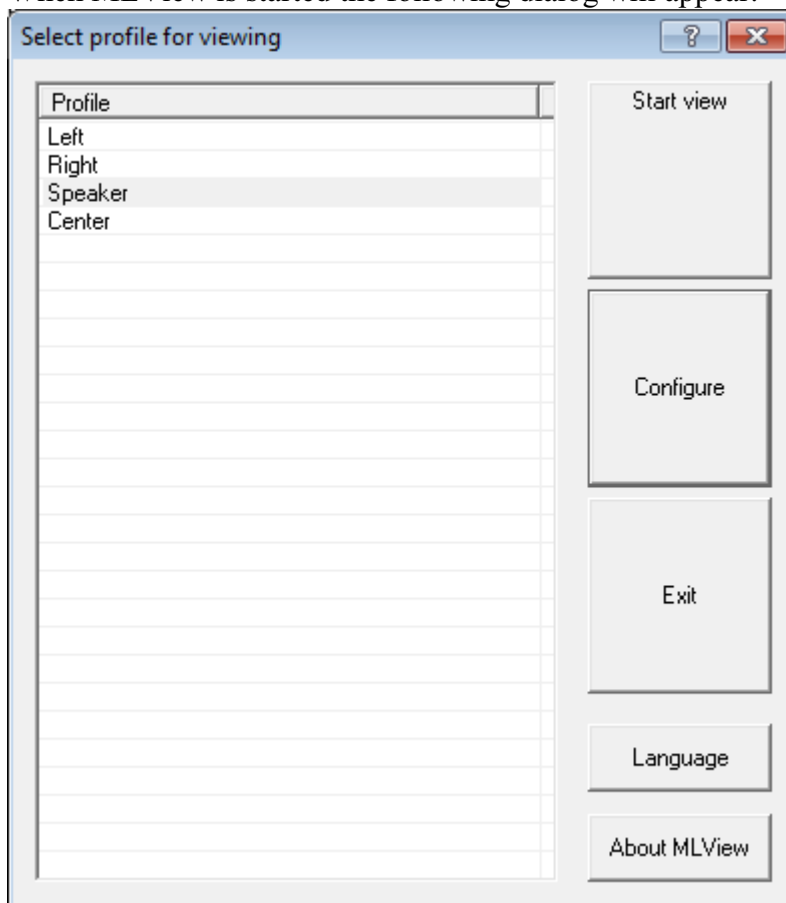
5.4.1 Naming standard

MLView should be installed on the office computer, but can be executed from different computers in the network. Our recommendations and guidelines for naming is as follows:

Item	Standard	Example/Comment
Computer name	OFFICE	
Share the C-disk with the following resource name	C	Remember write permission
Directory for MLView	C:\Megalink\View	The path through the network will be: \\OFFICE\C\Megalink\View

5.4.2 Start-up

When MLView is started the following dialog will appear:



Profile Selection Dialog

If no dialog is selected or any button is pushed within 10 seconds, the system will automatically start the previous profile in maximized mode.

Press the configure button to enter the dialog for setting up the system.

5.4.3 Configuration

The dialog for configuration contains several tabs. Select the appropriate tab and change the relevant options.

5.4.3.1 Enter licence key

Insert values for User and Licence key as provided by Megalink. If valid licence is not present the MLView system will not allow viewing the audience screens configured in the profiles.

5.4.3.2 Colour configuration

Define colours according to preference. The default values provide a reasonable set for maximum contrast.

5.4.3.3 Range configuration

Insert a line for each shooting stand on your competition site. Use a full network path to the directories for the range management software (MLRange) at each shooting stand PC.

5.4.3.4 Create Pictures

Build a library of screens to be displayed to the audience. The screens are defined by adding lanes from wanted ranges and selecting suitable options. Be careful to verify the selection of screen and range before targets are added or removed.!

Lane	Range	Type	Zoom
1	Hold 1	Normal graphic	A123
2	Hold 1	Normal graphic	A123
3	Hold 1	Normal graphic	A123
4	Hold 1	Normal graphic	A123
5	Hold 1	Normal graphic	A123
6	Hold 1	Normal graphic	A123
7	Hold 1	Normal graphic	A123
8	Hold 1	Normal graphic	A123
9	Hold 1	Normal graphic	A123
10	Hold 1	Normal graphic	A123

Picture Setup Dialog

5.5 MLAdmin

This chapter provides an introduction to the use of MLAdmin (version 4.00). The screen examples will not be similar to your own version. For more detailed information we would like to refer to the on-line help.

5.5.1 Naming standard

MLAdmin should be installed and executed locally on the range management computer at the shooting range. Our recommendations and guidelines for naming is as follows:

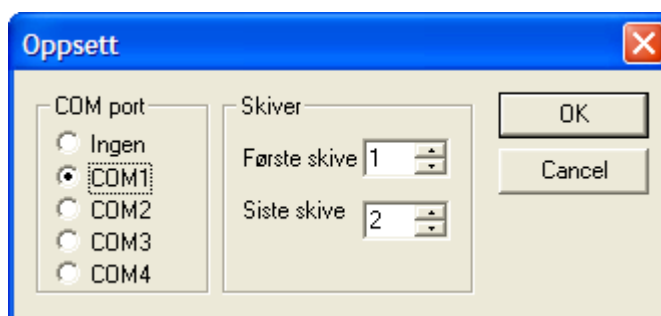
Item	Standard	Example/Comment
Computer name	STAND<range>	STPL300 STPL10
Directory for MLRange	C:\Megalink\Stand	The path through the network will be: \\STAND300\C\Megalink\Stand

5.5.2 First start-up

The first time MLAdmin is started you have to enter the menu File + Setup to define which serial communication port and lane range to use.

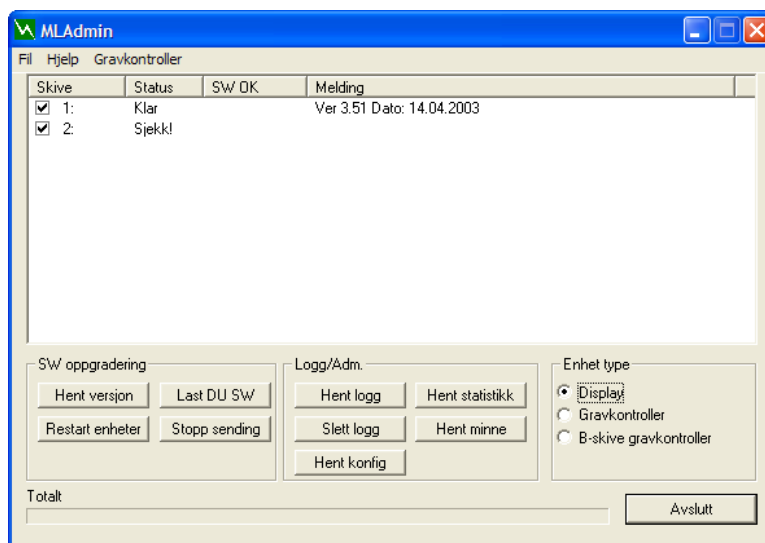
Select the port the PC-adaptor is connected to and insert the first and last lane you want to

work with. When changing the serial communication port selection you have to restart MLAdmin.



5.5.3 Normal start-up

When the MLAdmin is started with correct setup, you can use the radio buttons in the lower right position to select which unit to work with. The following options are available:



Display	Display unit for the shooter
Target controller	The electronic card inside the sensor unit in the target
B-Target Target controller	The controller unit for twin targets (for DFS 15m without target lift)

5.5.4 Work with MLAdmin

The process for upgrading the ML2000 components is described in the chapter “Configuration and upgrading”.

5.6 MLCard

This chapter provides an introduction to the use of MLCard (version 4.00). The screen examples will not be similar to your own version. For more detailed information we would like to refer to the on-line help.

5.6.1 Naming standard

MLAdmin can be installed and executed on any computer. Our recommendations and guidelines for naming are as follows:

Item	Standard	Example/Comment
Directory for MLCard	C:\Megalink\Kort	

5.6.2 Installing

MLCard is used for administration of smartcards. The program requires a CHIPdrive card reader from Towitoko electronics. A few files have to be put in the system directories for the card reader driver to work. We have included these files in the self-extracting file. The process for extraction will be the following:

- Execute the file you downloaded from internet (e.g. MLCard-101.exe)
- Press OK in the first information box
- Select the UnZip button in the next dialog without modifying the standard values (install in <C:\Megalink\MLCard>)
- Confirm the receipt message with OK
- Close the MS-DOS window if it remains on the screen after finishing.

The files that are copied to the Windows directory are the following:

- scard32.dll
- scard32.exe

We recommend creating a shortcut on your desktop for MLCard.

NB! Our standard card reader is supplied with power from the mouse port of the PC with a parasitic cable. Not all mouse ports are designed for on-line connection. To be safe you should power down the PC before connecting the card reader.

Tips: Windows could detect the card reader if you boot the PC with the reader connected. You can deal with this in the following ways:

- Try to cancel the installation request. If the message keeps popping up on booting, you have to continue cancelling the request
- Disconnect the card reader from the serial communication port when booting.
- Turn off plug and play in BIOS (for experienced PC users only)

5.6.3 Administrator card

The smartcard solution is delivered with two administration cards (ADMIN) as standard. With the ADMIN cards you can do the following:

- Lock the display units in card mode or open them for free use
- Issue new user cards or reissue old cards
- Add or remove shots from user cards

The administrator cards are unique for each club. This is used to inhibit the use of other administration cards for your range. When the display unit is locked with your ADMIN card the monitor will display the name of your range (club).

The ADMIN cards are therefore valuable and should be handled as a master key to the system

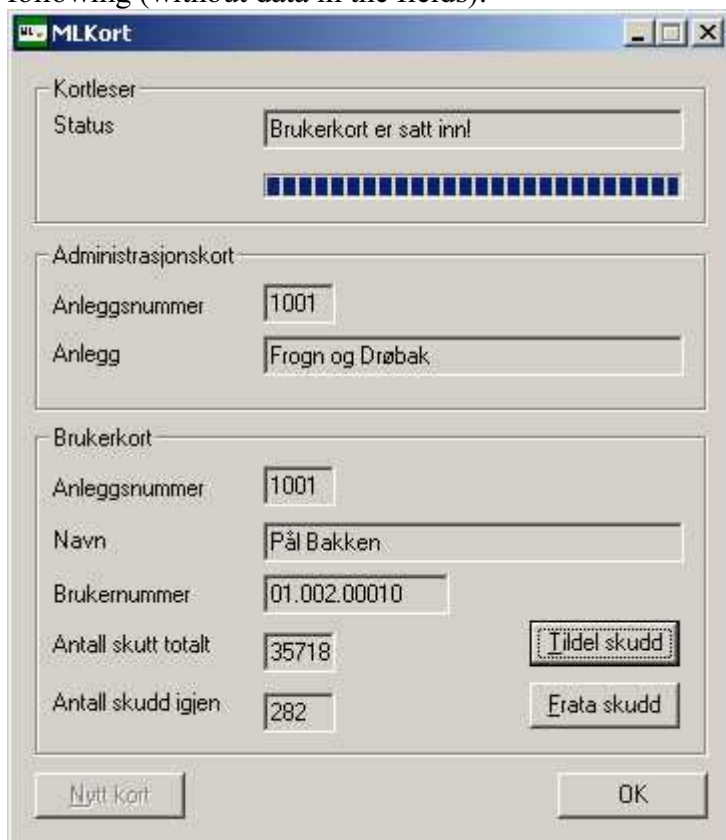
5.6.4 User card

All users that are granted access to the range has to be equipped with a user card. The card contains the following information:

- The name of the user. This name will be displayed on the display unit and in the administration program
- Counter for the total number of shots registered on the card. This counter is limited to 50,000. The card must be reissued when this limit is reached
- A counter with the number of remaining shots on the card. The administration program is used to adjust this number when the user purchases more shots. You can assign a maximum of 9999 shots in the card.

5.6.5 Usage

Start MLCard from the installed directory or your shortcut on the desktop. The screen looks like the following (without data in the fields):



The screenshot shows the MLCort application window. It has three main sections: Kortleser, Administrasjonskort, and Brukerkort. The Kortleser section has a Status field with the text 'Brukerkort er satt inn!' and a progress bar below it. The Administrasjonskort section has fields for Anleggsnummer (1001) and Anlegg (Frogn og Drøbak). The Brukerkort section has fields for Anleggsnummer (1001), Navn (Pål Bakken), Brukernummer (01.002.00010), Antall skudd totalt (35718), and Antall skudd igjen (282). There are buttons for 'Tildel skudd' and 'Erata skudd' next to the shot counters. At the bottom, there are buttons for 'Nytt kort' and 'OK'.

5.6.5.1 Read user card

Insert the user card. If the administration card has not been inserted yet, the card will be regarded as belonging to a unknown range. You will then get the text "Unknown user card inserted" in the status field. The other fields will display values for:

- Range number
- Name of user
- Total number of shots used
- Number of shots left

It is a good idea to note down the number of shots left before you do any changes. Remember that these numbers represents money for the users and the club. It is generated a system log, but you would probably like to avoid using it.

5.6.5.2 Issue new user card

- Insert the administrator card
- Press the **New card** button (the button is only available when the ADMIN card is inserted)
- In the dialog that appears you should type in the name of the user for the new card before pushin the OK button.
- In the status field you will see a text that asks you to remove the ADMIN card and then asked to insert a new user card.
- When the new user card is inserted you have to confirm the creation. Remember that possible old data on the card is irreversibly overwritten.
- You might continue directly with the procedure for assigning shots to the card

5.6.5.3 Fill up or remove shots in user card

- Insert the administration card for the range. When the range name is displayed you can remove the ADMIN card again
- Insert the user card
- Note the number of shots left on the card
- Push the button **Add shots** or **Remove shots**
- Type in the number of shots and press **OK**
- Verify that the expected number of shots is displayed as left on the card. If not you have typed wrong value and have to adjust
- Remove the card

You can continue this process for other user cards without inserting the ADMIN card again. For this reason you should be careful about closing the MLCard program and remove the ADMIN card after use if the equipment is available for others.

5.7 MLShoot

This chapter provides an introduction to the use of MLShot (version 4.00). The screen examples will not be similar to your own version. For more detailed information we would like to refer to the on-line help.

5.7.1 Naming standard

MLShoot can be installed and executed on any computer. Our recommendations are the following:

Item	Standard	Example/Comment
Directory with MLShot	C:\Megalink\Shoot	

5.7.2 HASP security dongle

The use of MLShot requires a HW software protection dongle to be installed in the parallel port of your PC. This device requires the installation of a driver. The installation program is called HDD32.exe and can be downloaded from our internet pages. Double click the file and follow the instructions for installation.